

Canolbarth a Gorllewin Cymru Iachach

11 Hydref 2022

A Healthier Mid and West Wales

1 October 2022



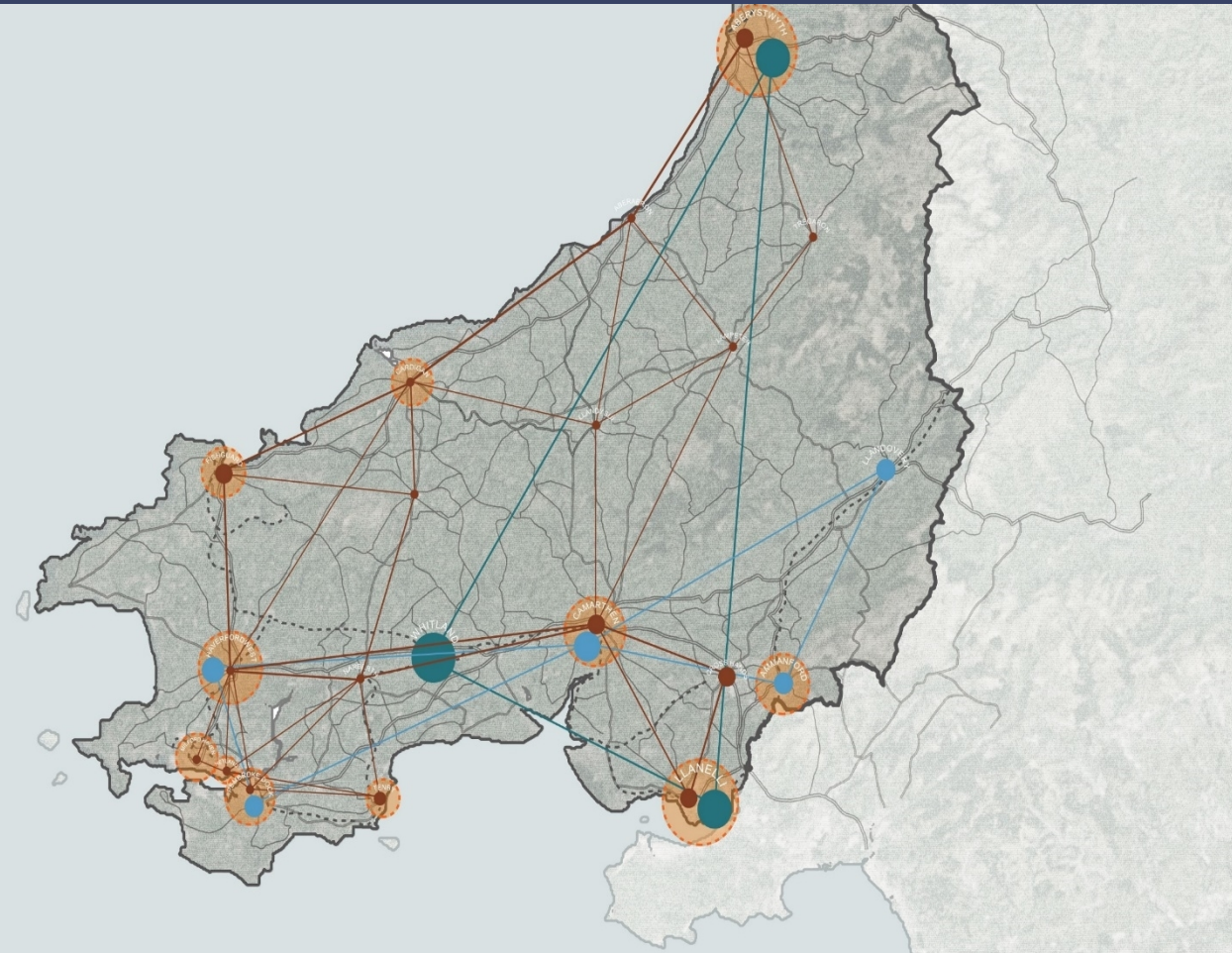
Cefndir

Background

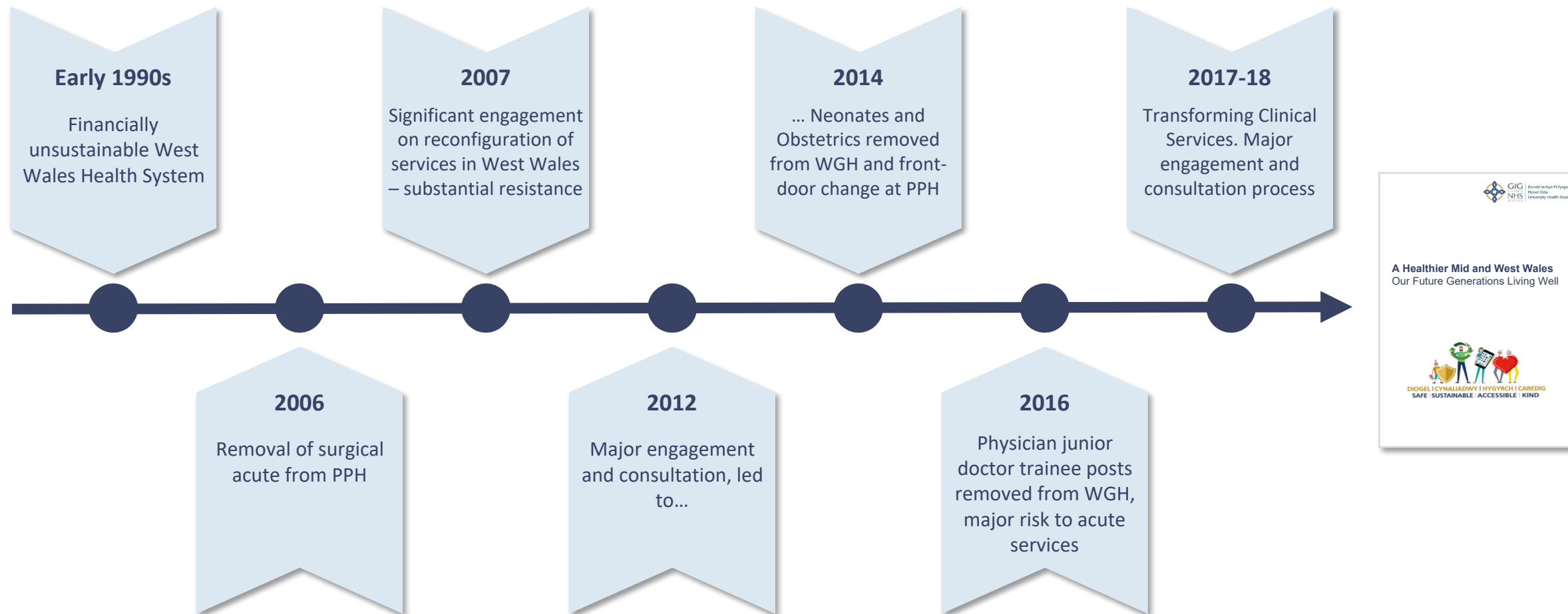


Hywel Dda – Key Facts

- Serve a population of 385,000 in 3 counties of Carmarthenshire, Ceredigion and Pembrokeshire
- Cover 25% of the landmass of Wales
- 2nd most sparsely populated Health Board in Wales
- 4 main conurbations have following population
 - Llanelli @46,000
 - Carmarthen @13,000
 - Haverfordwest @15,000
 - Aberystwyth @12,000
 - Compares with the population of Riverside in Cardiff @14,000
- Travel times for the
 - @70 miles north to south is over 2 hours
 - @60 miles west to east is about 1.5 hours



Health and Care Strategy - Background



Glangwili General Hospital - Today



Ward Roof



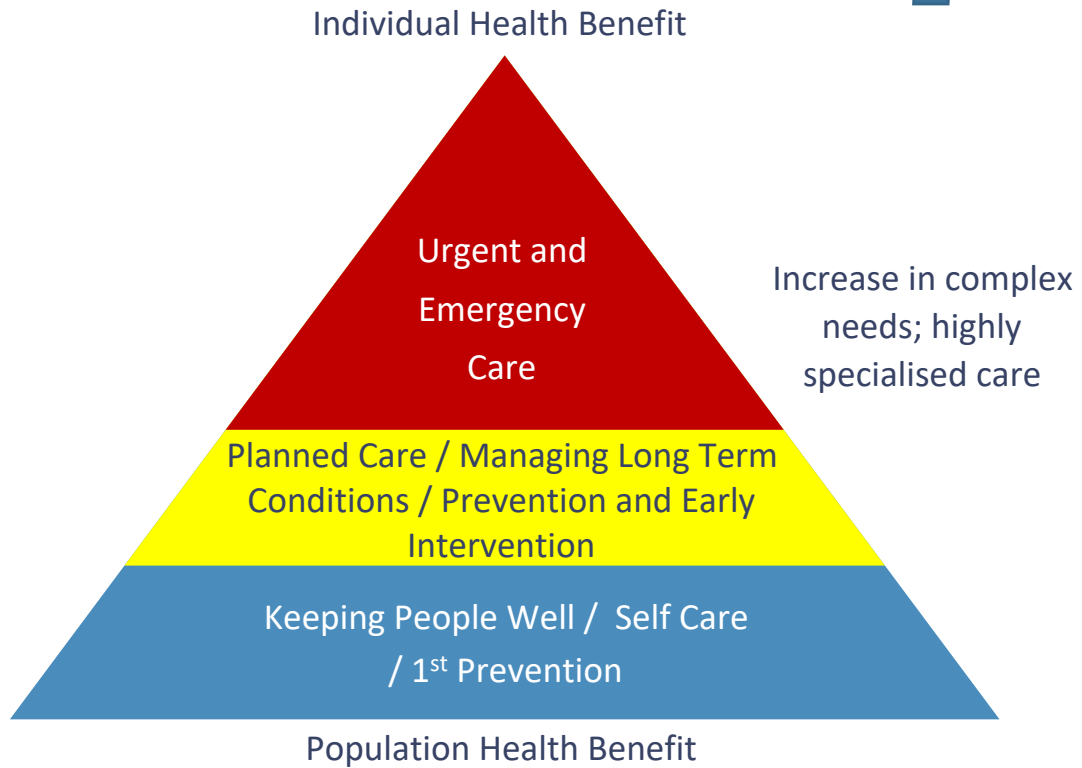
Core Block



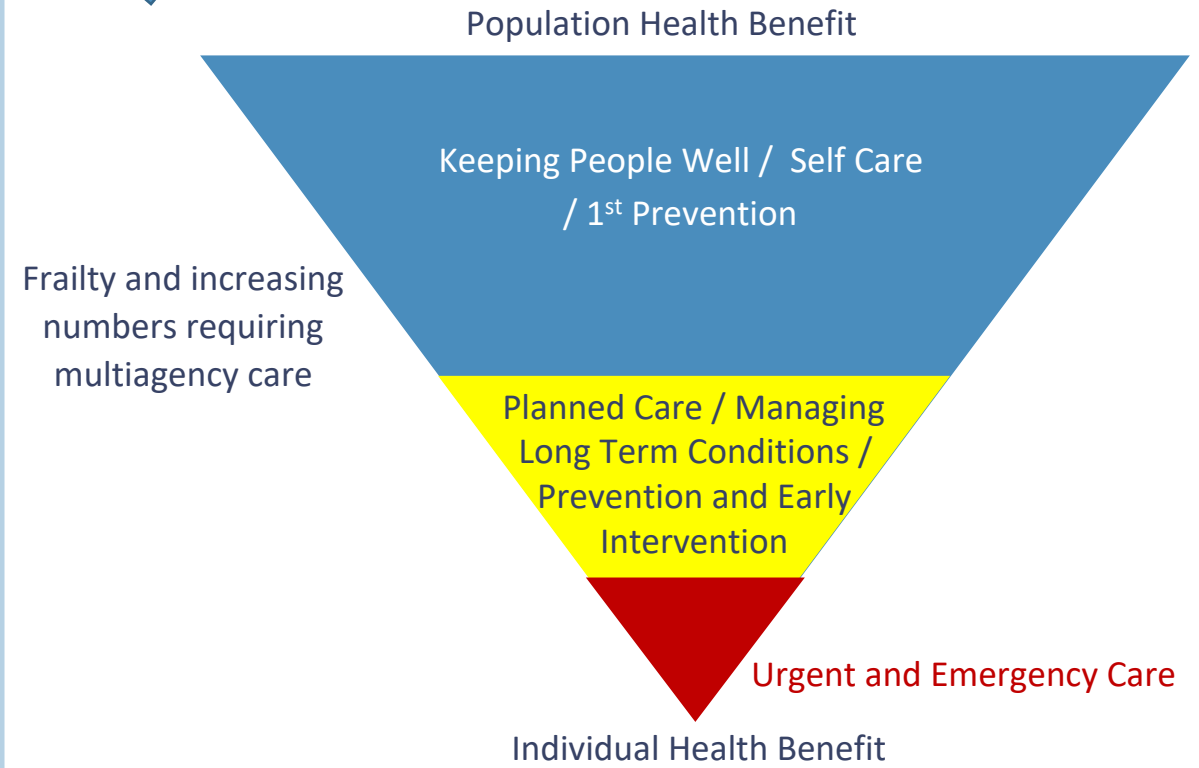
Outpatients / Path Lab

Shifting the Curve

Where we are...



Where we need to be...



Health and Care Strategy – Infrastructure implications

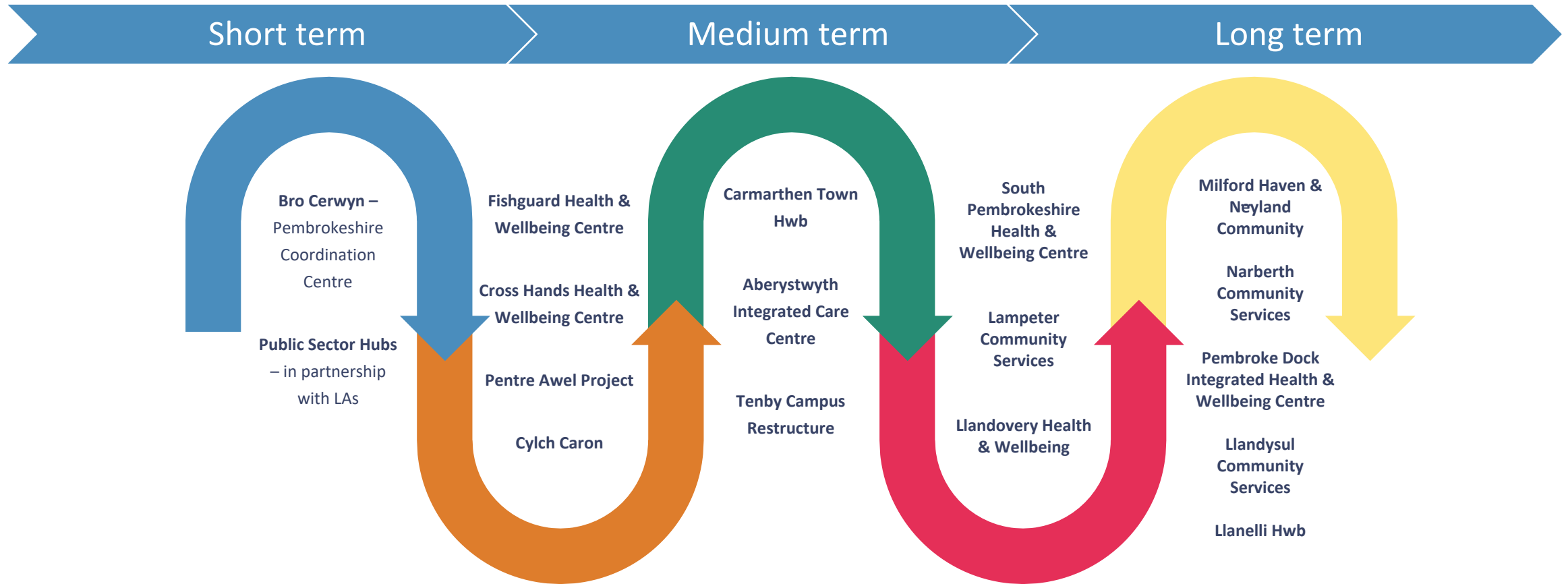
- The development of a **network of Community Facilities**, working with local communities.
- **A new urgent and planned care hospital in the South of the Health Board area**; between Narberth and St Clears.
- **A repurposed Glangwili General Hospital and Withybush General Hospital** offering a range of community hospital services to support a social model for health and well-being, designed with local people to meet their needs.
- Acute medicine and low risk day case surgery continues at **Prince Philip General Hospital**
- **Bronglais Hospital** services to continue the range of DGH services. Bronglais strategy subsequently agreed to ensure longer term sustainability.

Y model yn y dyfodol

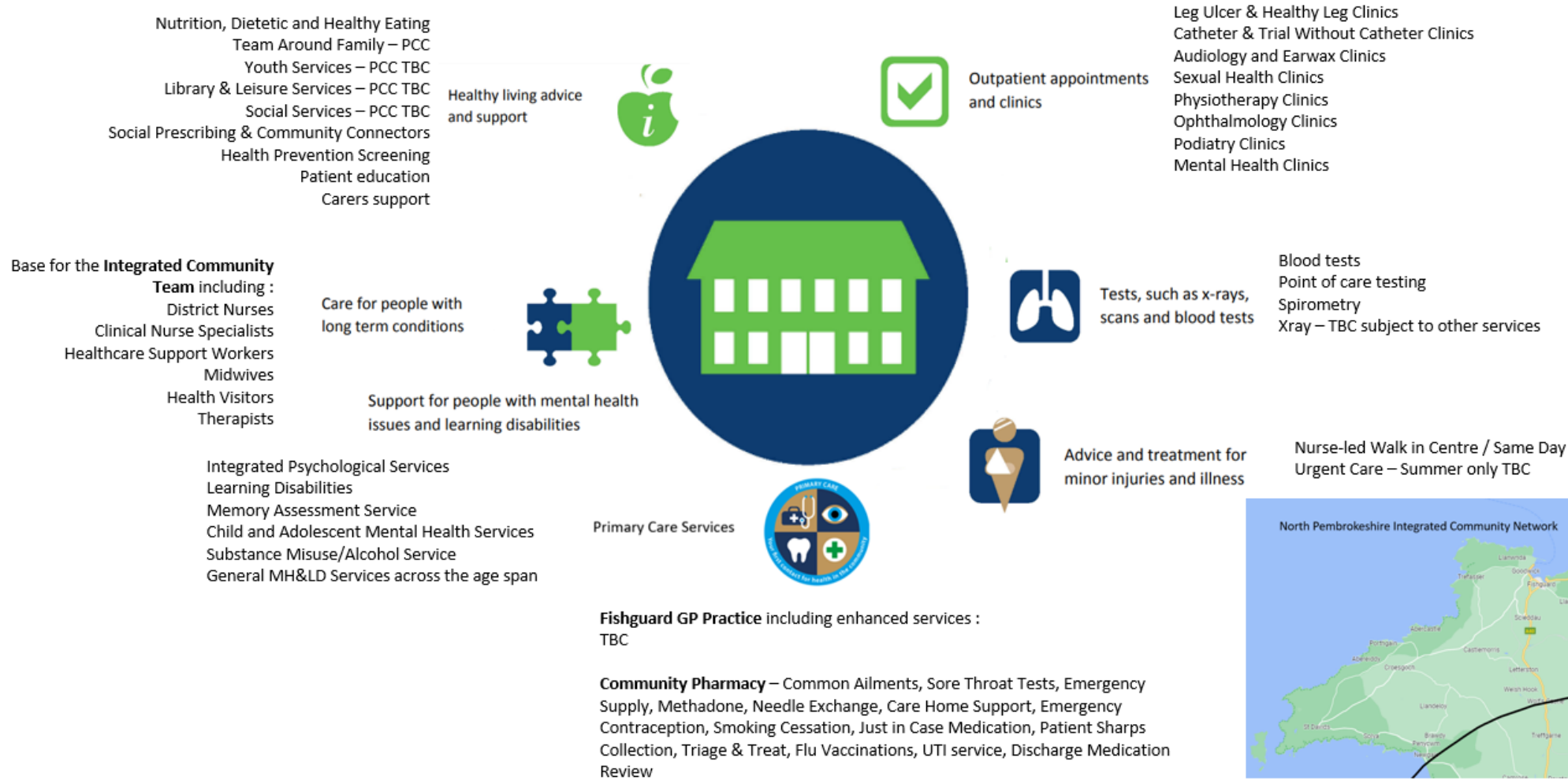
The future model



Community Infrastructure Development



Fishguard Health and Well-being Centre
 This is the local health & well-being centre for the North Pembrokeshire Integrated
 Community Network in Pembrokeshire.
DRAFT FOR DISCUSSION



Manteision ehangach i'n cymuned

Wider societal benefits



Societal and Community Benefits



Training and Employment

- Permanent employment
- Apprenticeships
- Work Experience

Education

- Work placements
- Work with local college on qualifications, careers events
- School visits
- Volunteering days

Labour Force

- Use of local/Welsh workforce

Supply Chain

- Use of local sub-contractors
- % spent in Wales on Project

Environmental

- More energy efficient buildings
- Waste diverted from landfill
- Biophilic design

Community Initiatives

- Work with local youth and other community groups
- Community newsletter

Economic

- Anchor institute
- Accelerating economic development

Town Centres

- Community hubs
- Hybrid working and non-clinical accommodation in town centres

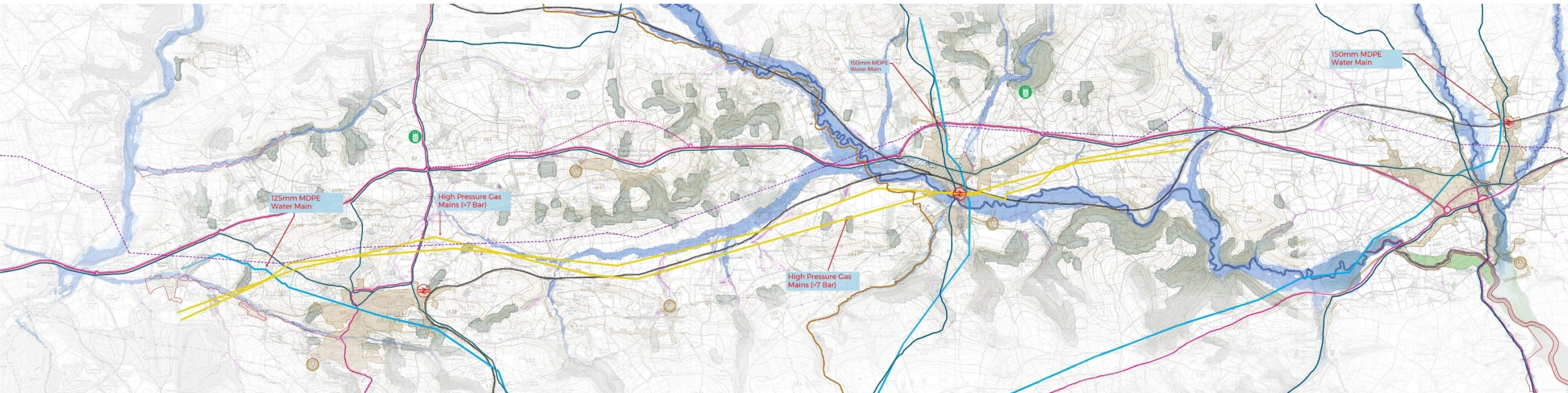
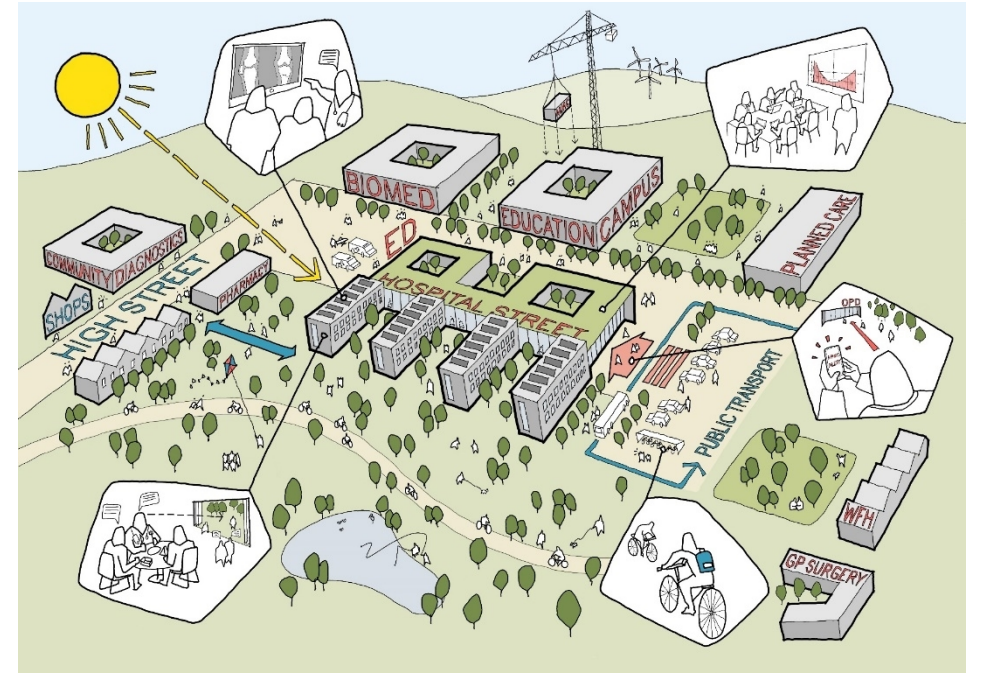
Ysbyty Gofal Brys a Gofal wedi'i Gynllunio

The new Urgent and Planned Care Hospital



New Urgent & Planned Care Hospital (campus)

- Land identification process - ongoing
- Circa 70,000sqm clinical building
- 506 beds (including assessment and day case)
- 18 operating theatres, X-Ray, CT, MR, GC, Ultrasound
- Support services
- Standalone mental health unit – 98 beds
- Standalone admin/education building
- Separation between urgent and planned care



Biophilia

The principles of biophilic design are used to create natural, enriching, multi-sensory internal environments for the benefit of building users health & wellbeing.

- Environmental features
 - Natural characteristics in design
- Natural patterns & processes:
 - Multisensory, diverse and dynamic
- Place based solutions
 - Consideration of historic, social and cultural context
- Natural shapes & forms
- Light & space
- Relationship between humans and nature



Programme timeline for the new urgent and planned care hospital

Milestone	Urgent and Planned Care Hospital
PBC Submission	End January 2022
PBC Endorsed (for purposes of progression)	March-May 2022
OBC team selected (BfW framework)	May – July 2022
Preferred site confirmed (potentially subject to consultation and heads of terms)	By July 2022
Option to purchase	July/August 2022
Outline Planning Application	Dec 2023
OBC Submission	End January 2024
Outline Planning Approval	End May 2024
OBC Approval (WG)	Mid July 2024
FBC Submission	Mid-March 2026
FBC Approval (WG)	Early June 2026
Purchase Site completion	Mid July 2026
Start on site	August 2026
Construction Completion	End May 2029
Commissioning	June – October 2029
Opening	End October 2029

Tir

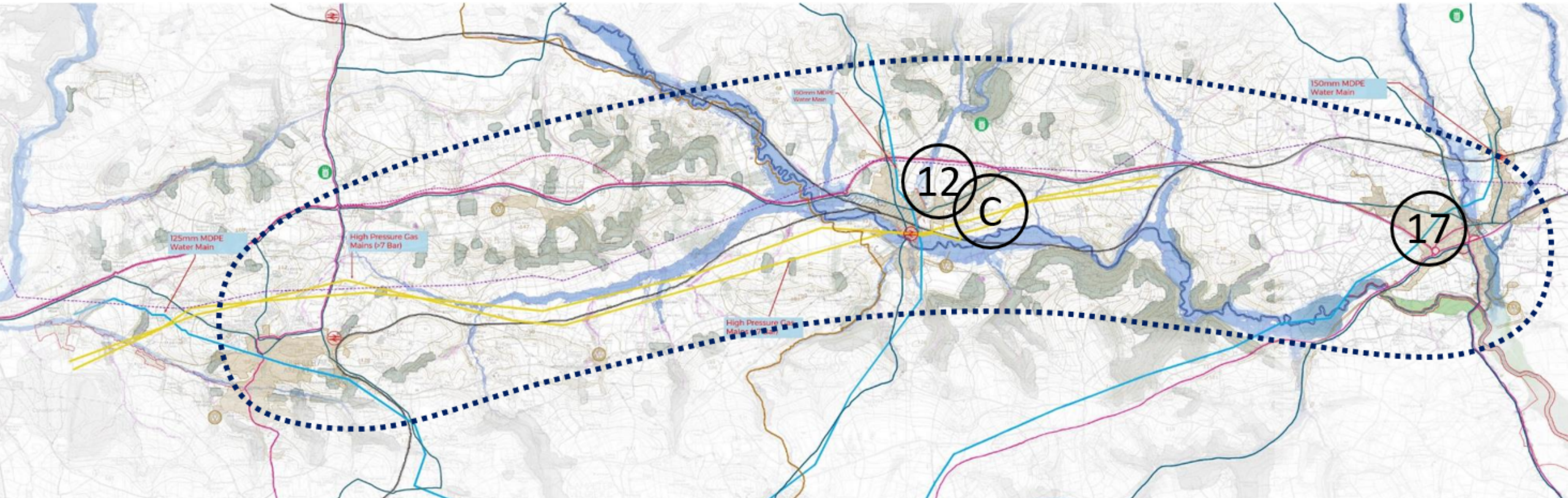
Land



Land

- Summer 2021: public asked to nominate potential sites. 11 identified in total.
- October 2021: ‘Longlist to Shortlist’ workshop held, a Shortlist of 5 sites recommended
- February 2022: Longlist to Shortlist workshop reconvened following further site investigations to confirm the Shortlist of sites for technical appraisal
- March 2022: 5 site shortlist endorsed by Board: 1 Narberth, 2 Whitland and 2 St Clears
- Mar-Aug 2022: 4 appraisal workstreams evaluated the 5 shortlisted sites and reported to Board in Aug
- August 2022: Board selected three sites to take to the next stage, 2 in Whitland and 1 in St Clears, and agreed to a public consultation on these three sites.

The "Zone" and shortlisted sites



Narberth

Whitland

St Clears

Transport

- “The transport case” – fundamental to the new operating model and the functionality of the new Urgent and Planned Care Hospital
- Significant levels of scrutiny in process to date
- Transport analysis / annexe – baseline and future scenarios for WAST and other transport modes
- Significant policy context
- Opportunities for “Hywel Dda Transport & Accessibility” Strategy development
 - Masterplanning
 - Planning policy / application
 - Investment priorities for the region
 - Behaviour change / cultural attitudes to modal shifts
 - Etc...etc
- Appointment of Transport Development Manager
- **Opportunities to influence & support regional transport planning via CJC’s**



Walking and Cycling



Public Transport



Ultra-Low
Emissions Vehicles



Other Private
Motor Vehicles

Y camau nesaf

Next steps



Next Steps

- Programme Business Case – The formal response from WG at this stage is to jointly commission a review of the clinical model prior to PBC endorsement. WG has also requested completion of a Strategic Outline Case. The scope for both pieces of work are to be discussed in meetings with WG during October.
- Land - In parallel, to continue with the requisite activities to develop heads of terms, options to purchase etc to secure the land. This will involve identifying further technical information associated with the sites, and the development of information to support any planning activities.
- Land Appraisal – public consultation in New Year
- Continue to develop plans and business cases for community facilities

Concluding remarks

- At its heart, A Healthier Mid and West Wales, is about changing the model to one that is more sustainable with a greater emphasis on improved health and wellbeing, prevention and integrated community care
- It was built upon large-scale public and staff engagement, creating a ‘window of opportunity’ to address longstanding issues
- The size, rurality and population distribution for mid and west Wales are particularly challenging for public service provision
- 50 years ago, when the UK secondary care system was redesigned around District General Hospitals, four acute sites for this area would have been typical
- The experience of the last 20 years has demonstrated this configuration is increasingly unsuitable and unsustainable for modern healthcare
- The Health Board has ageing, poor quality and inefficient estate with 40% over 50 years old. Significant investment will be required even if the status quo was to remain
- **Finally, we see this as an opportunity to invest in the communities of mid and west wales - not just the health service - with long-term benefits for jobs, the economy, education and training, our towns and the environment**

Diolch yn fawr!

Thank you!

**Sesiwn holi ac
ateb**

Questions & discussion

